



Download Installation Guide:
Installation Guide is available in:
English, German, Spanish, French,
Italian, Dutch, Portuguese, Swedish,
Danish, Norwegian, Polish, Czech,
Hungarian, Russian, Turkish



Download Installation Guide:
Installation Guide is available in:
English, German, Spanish, French,
Italian, Dutch, Portuguese, Swedish,
Danish, Norwegian, Polish, Czech,
Hungarian, Russian, Turkish

www.mt.com/ind-downloads-multimount

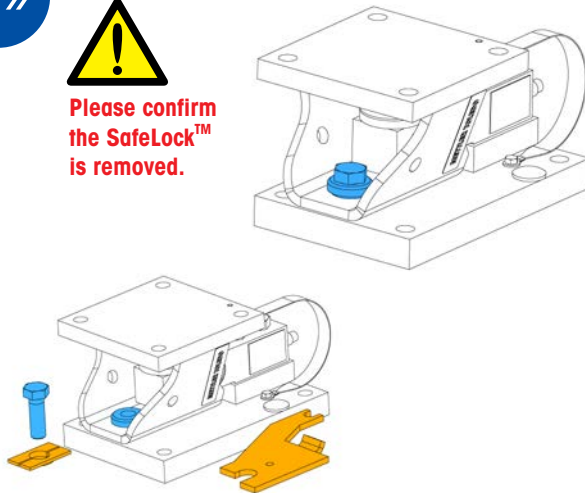
www.mt.com/ind-downloads-powermount

Before You Begin

1»

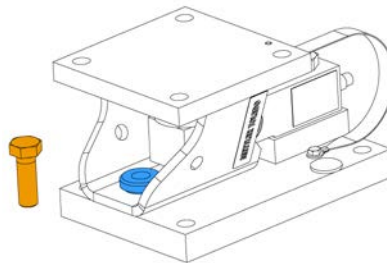


Please confirm
the SafeLock™
is removed.



Remove Anti-lift Bolt

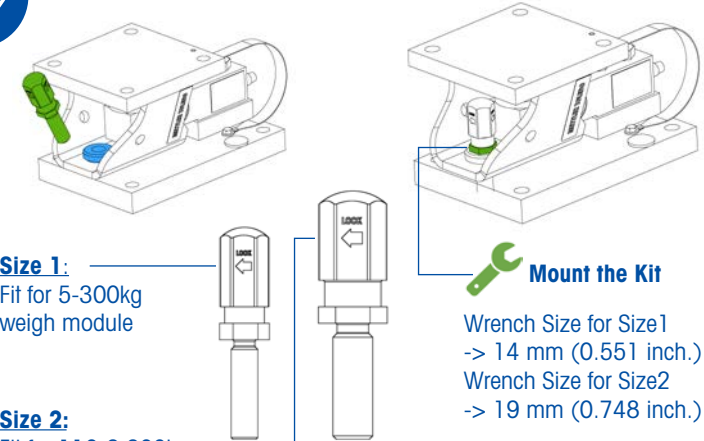
2»



Keep the sleeve in position
(part in blue)

Mount the Mobility Kit

3»



Size 1:
Fit for 5-300kg
weigh module

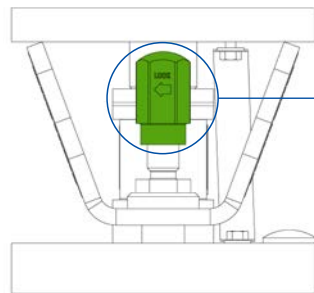
Size 2:
Fit for 110-2,200kg
weigh module

Mount the Kit

Wrench Size for Size1
-> 14 mm (0.551 inch.)
Wrench Size for Size2
-> 19 mm (0.748 inch.)

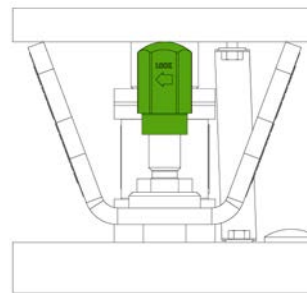
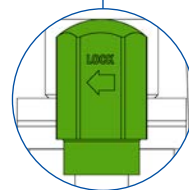
Lock the Weigh Module Before Moving to New Location

4»



**Turn the Nut in
Lock-Arrow Direction**

Wrench Size for Size1
-> 14 mm (0.551 inch.)
Wrench Size for Size2
-> 19 mm (0.748 inch.)



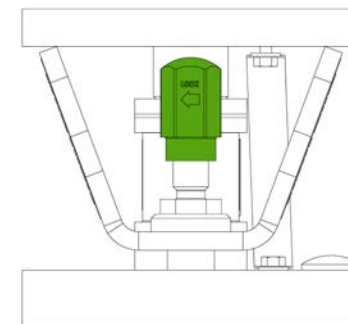
Turn the nut until the top plate
is fully jacked up.



The load cell is fully unloaded
without shock damage.

Unlock after Moving

5»



Release the Mobility Kit

Turn the nut in the opposite direction to begin weighing.



Please keep the mobility kit mounted permanently for
daily mobile weighing.